



# 安徽富信半导体科技有限公司

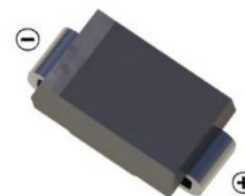
ANHUI FOSAN SEMICONDUCTOR TECHNOLOGY CO., LTD.

RS3AB-RS3MB

## SMB Fast Recovery Diode 快恢复二极管

### ■ Features 特点

Built-in strain relief 内应力释放  
 Fast Recovery time 快恢复时间  
 Surface mount device 表面贴装器件  
 Case 封装:SMB(DO-214AA)



### ■ Maximum Rating 最大额定值

( $T_A=25^{\circ}\text{C}$  unless otherwise noted 如无特殊说明, 温度为  $25^{\circ}\text{C}$ )

Characteristic 特性参数	Symbol 符号	RS3 AB	RS3 BB	RS3 DB	RS3 GB	RS3 JB	RS3 KB	RS3 MB	Unit 单位
Marking 印字		RS 3A	RS 3B	RS 3D	RS 3G	RS 3J	RS 3K	RS 3M	
Repetitive Peak Reverse Voltage 重复峰值反向电压	$V_{RRM}$	50	100	200	400	600	800	1000	V
DC Reverse Voltage 直流反向电压	$V_R$	50	100	200	400	600	800	1000	V
RMS Reverse Voltage 反向电压均方根值	$V_{R(RMS)}$	35	70	140	280	420	560	700	V
Forward Rectified Current 正向整流电流	$I_F$	3							A
Peak Surge Current 峰值浪涌电流	$I_{FSM}$	100							A
Thermal Resistance J-A 结到环境热阻	$R_{\theta JA}$	12.5							$^{\circ}\text{C}/\text{W}$
Junction/Storage Temperature 结温/储藏温度	$T_J, T_{stg}$	-50to+150 $^{\circ}\text{C}$							$^{\circ}\text{C}$

### ■ Electrical Characteristics 电特性

( $T_A=25^{\circ}\text{C}$  unless otherwise noted 如无特殊说明, 温度为  $25^{\circ}\text{C}$ )

Characteristic 特性参数	Symbol 符号	RS3AB-RS3GB	RS3JB	RS3KB-RS3MB	Unit 单位	Condition 条件
Forward Voltage 正向电压	$V_F$	1.3			V	$I_F=3\text{A}$
Reverse Current 反向电流	$I_R$	5( $T_A=25^{\circ}\text{C}$ ) 200( $T_A=125^{\circ}\text{C}$ )			$\mu\text{A}$	$V_R=V_{RRM}$
Reverse Recovery Time 反向恢复时间	$T_{rr}$	150	250	500	nS	$I_F=0.5\text{A}, I_R=1\text{A}$ $I_{rr}=0.25\text{A}$
Junction Capacitance 结电容	$C_J$	60			pF	$V_R=4\text{V}, f=1\text{MHz}$

## ■ Typical Characteristic Curve 典型特性曲线

FIG.1-TYPICAL FORWARD CHARACTERISTICS

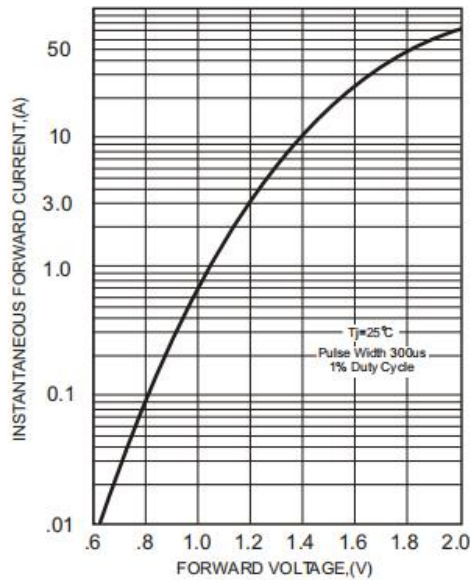


FIG.2-TYPICAL FORWARD CURRENT DERATING CURVE

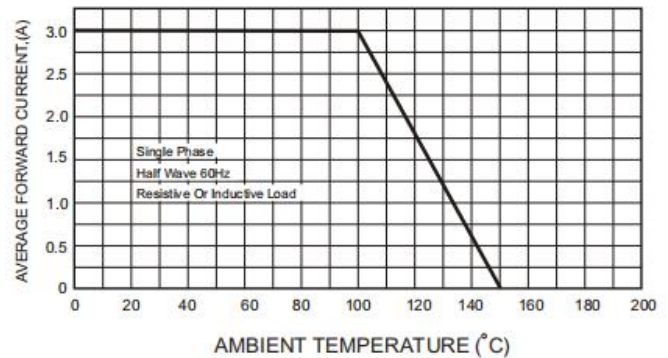


FIG.4-MAXIMUM NON-REPETITIVE FORWARD SURGE CURRENT

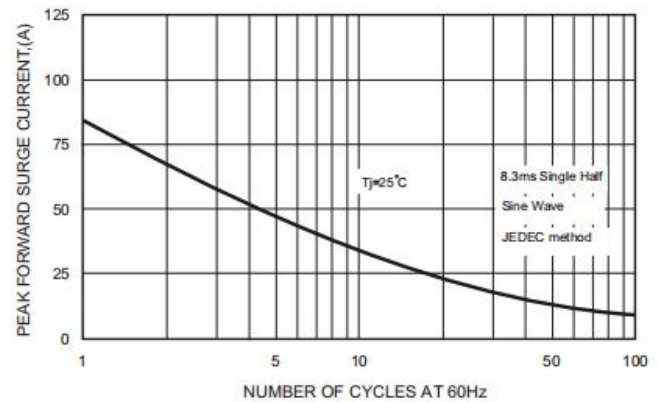
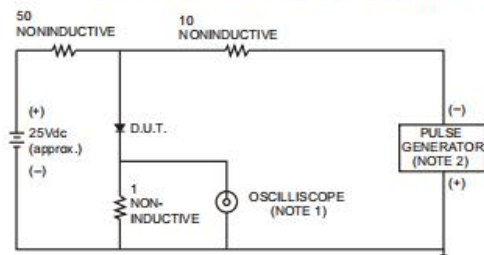


FIG.3- TEST CIRCUIT DIAGRAM AND REVERSE RECOVERY TIME CHARACTERISTICS



NOTES: 1. Rise Time= 7ns max., Input Impedance= 1 megohm, 22pF.  
2. Rise Time= 10ns max., Source Impedance= 50 ohms.

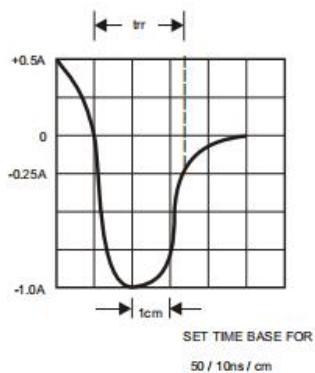
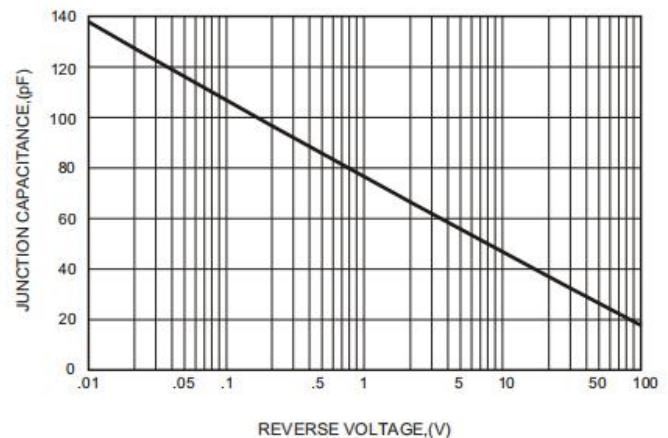
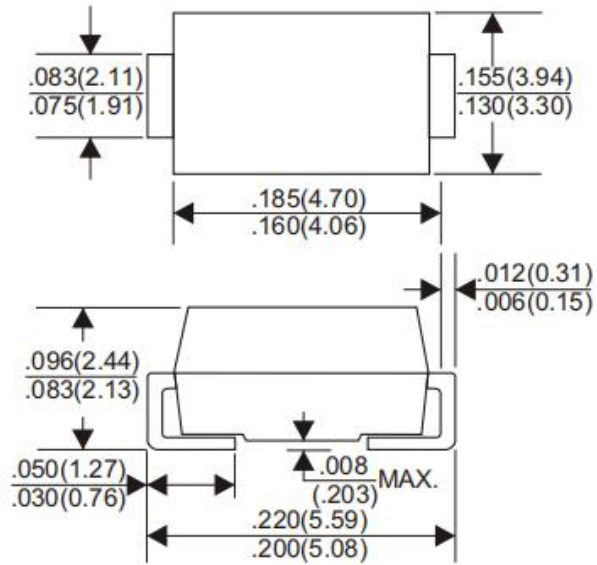


FIG.5-TYPICAL JUNCTION CAPACITANCE



## ■Dimension 外形封装尺寸

### DO-214AA(SMB)



Dimensions in inches and (millimeters)