



# 安徽富信半导体科技有限公司

ANHUI FOSAN SEMICONDUCTOR TECHNOLOGY CO., LTD.

RS2A-RS2M

## SMB Fast Recovery Diode 快恢复二极管

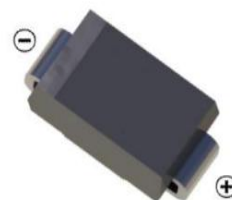
### ■ Features 特点

Glass Passivated Chip Junction 玻璃钝化芯片结

Fast Recovery time 快恢复时间

Surface mount device 表面贴装器件

Case 封装:SMB(DO-214AA)



### ■ Maximum Rating 最大额定值

( $T_A=25^{\circ}\text{C}$  unless otherwise noted 如无特殊说明, 温度为  $25^{\circ}\text{C}$ )

Characteristic 特性参数	Symbol 符号	RS 2A	RS 2B	RS 2D	RS 2G	RS 2J	RS 2K	RS 2M	Unit 单位
Repetitive Peak Reverse Voltage 重复峰值反向电压	$V_{RRM}$	50	100	200	400	600	800	1000	V
DC Reverse Voltage 直流反向电压	$V_R$	50	100	200	400	600	800	1000	V
RMS Reverse Voltage 反向电压均方根值	$V_{R(RMS)}$	35	70	140	280	420	560	700	V
Forward Rectified Current 正向整流电流	$I_F$	2							A
Peak Surge Current 峰值浪涌电流	$I_{FSM}$	50							A
Thermal Resistance J-A 结到环境热阻	$R_{\theta JA}$	65							$^{\circ}\text{C}/\text{W}$
Junction/Storage Temperature 结温/储藏温度	$T_J, T_{stg}$	-50to+150 $^{\circ}\text{C}$							$^{\circ}\text{C}$

### ■ Electrical Characteristics 电特性

( $T_A=25^{\circ}\text{C}$  unless otherwise noted 如无特殊说明, 温度为  $25^{\circ}\text{C}$ )

Characteristic 特性参数	Symbol 符号	RS2A-RS2G	RS2J	RS2K-RS2M	Unit 单位	Condition 条件
Forward Voltage 正向电压	$V_F$	1.3			V	$I_F=2\text{A}$
Reverse Current 反向电流	$I_R$	5( $T_A=25^{\circ}\text{C}$ ) 300( $T_A=125^{\circ}\text{C}$ )			$\mu\text{A}$	$V_R=V_{RRM}$
Reverse Recovery Time 反向恢复时间	$T_{rr}$	150	250	500	nS	$I_F=0.5\text{A}, I_R=1\text{A}$ $I_{rr}=0.25\text{A}$
Junction Capacitance 结电容	$C_J$	50			pF	$V_R=4\text{V}, f=1\text{MHz}$

## ■ Typical Characteristic Curve 典型特性曲线

FIG.1-TYPICAL FORWARD CHARACTERISTICS

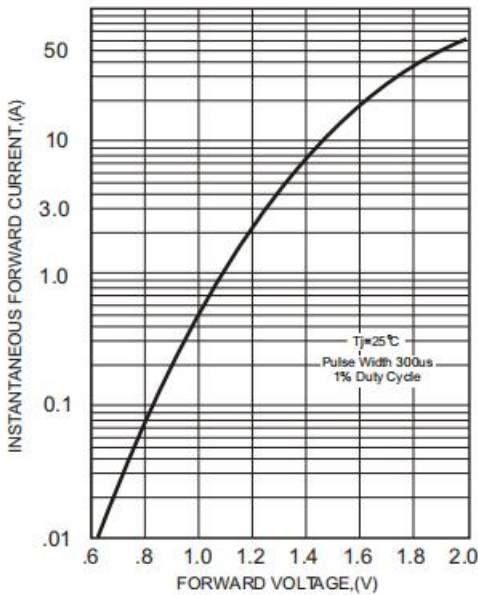


FIG.2-TYPICAL FORWARD CURRENT DERATING CURVE

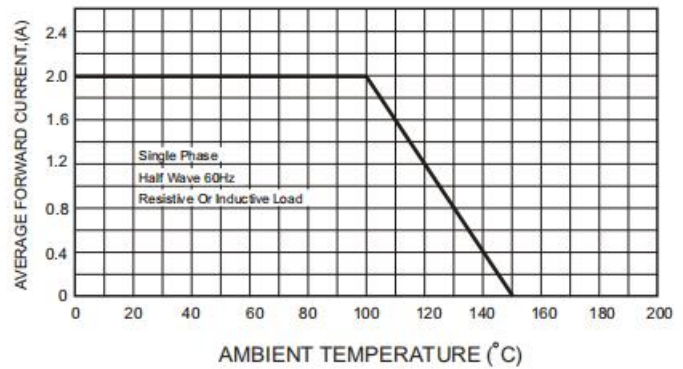
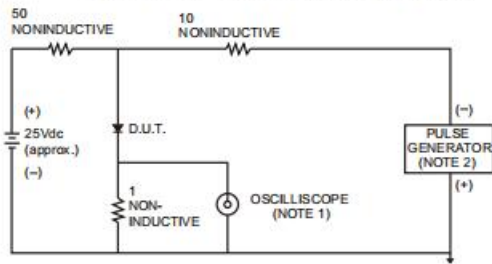


FIG.3- TEST CIRCUIT DIAGRAM AND REVERSE RECOVERY TIME CHARACTERISTICS



NOTES: 1. Rise Time = 7ns max., Input Impedance = 1 megohm, 22pF.  
2. Rise Time = 10ns max., Source Impedance = 50 ohms.

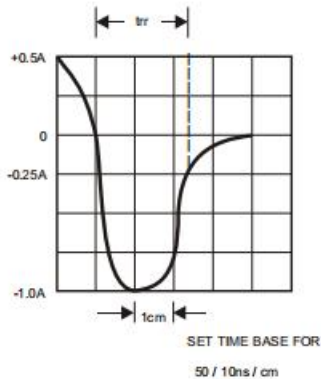


FIG.4-MAXIMUM NON-REPETITIVE FORWARD SURGE CURRENT

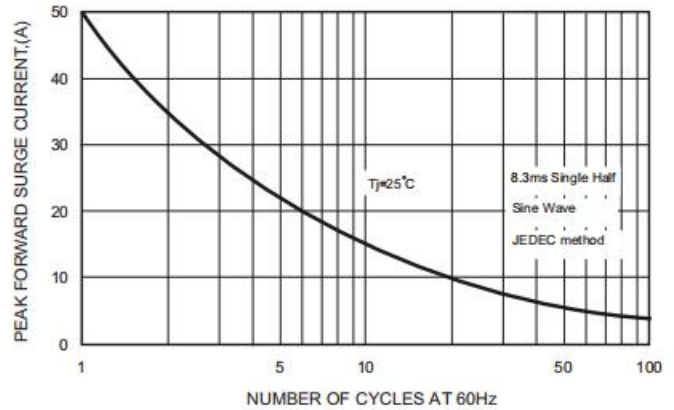
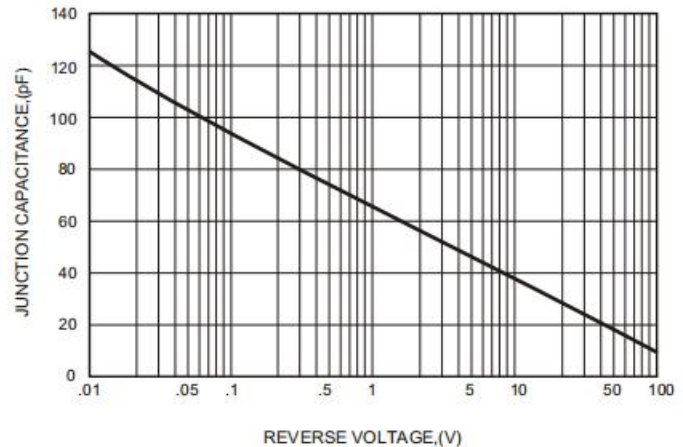
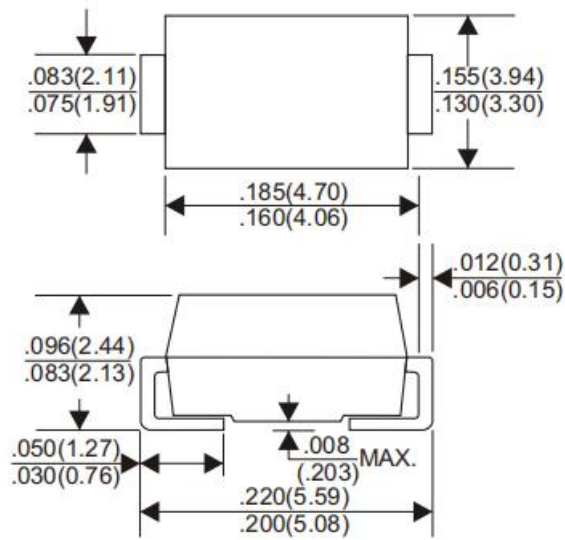


FIG.5-TYPICAL JUNCTION CAPACITANCE



## ■Dimension 外形封装尺寸

### DO-214AA(SMB)



Dimensions in inches and (millimeters)