



# 安徽富信半导体科技有限公司

ANHUI FOSAN SEMICONDUCTOR TECHNOLOGY CO., LTD.

FS79L06

## SOT-89 Three Terminal Regulator 三端稳压 IC

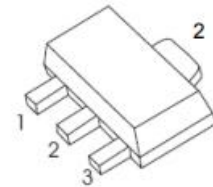
### ■ Features 特点

**Pin 脚位:** 1.Ground 地 2.Input 输入 3.Output 输出

**Output Voltage 输出电压:** -6V

**Output Current 输出电流:** 0.1A

**Power dissipation 耗散功率:** 0.5W



### ■ Absolute Maximum Ratings 最大额定值

( $T_A=25^{\circ}\text{C}$  unless otherwise noted 如无特殊说明, 温度为  $25^{\circ}\text{C}$ )

Characteristic 特性参数	Symbol 符号	Rat 额定值	Unit 单位
Input Voltage 输入电压	$V_i$	-30	V
Operating Current 工作电流	$I_o$	-100	mA
Power dissipation 耗散功率	$P_D$	600	mW
Thermal Resistance Junction-Ambient 热阻	$R_{\theta JA}$	208	$^{\circ}\text{C}/\text{W}$
Solder Temperature 焊接温度/时间	$T_d$	260	$^{\circ}\text{C}$
Solder Temperature/Time 焊接时间	$T_d$	10	S
Operating Ambient Temperature 工作温度	$T_A$	0~+150	$^{\circ}\text{C}$
Junction and Storage Temperature 结温和储藏温度	$T_J, T_{stg}$	-55to+150 $^{\circ}\text{C}$	

### ■ Device Marking 产品字标

FS79L06=79L06

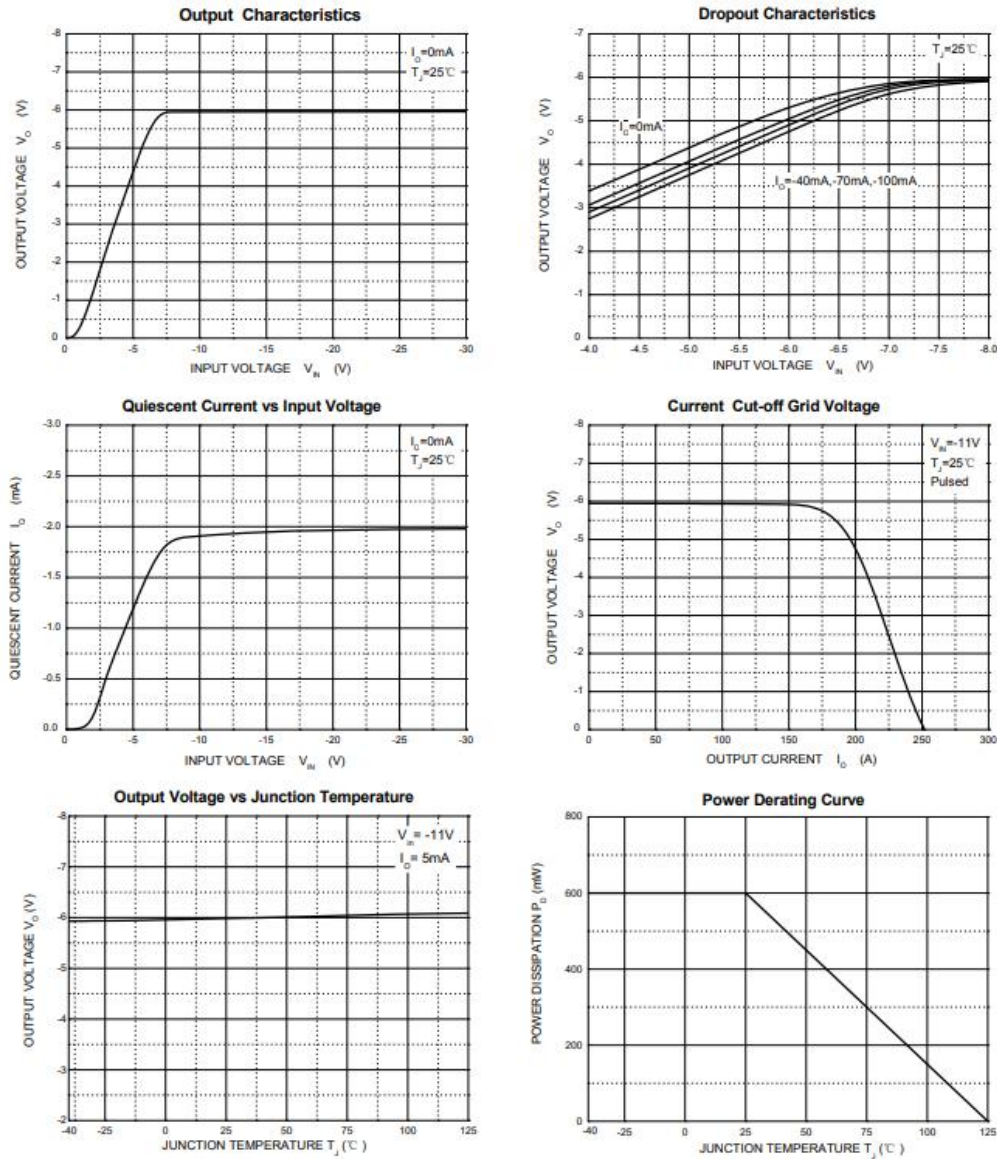


## ■ Electrical Characteristics 电特性

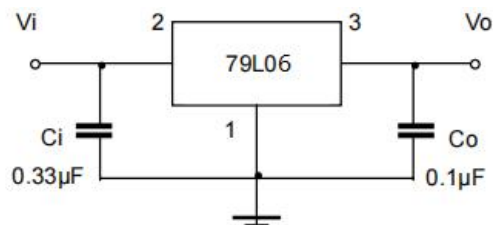
( $V_i = -12V$   $I_o = 40mA$   $C_i = 0.33\mu F$   $C_o = 0.1\mu F$   $T_A = 25^\circ C$  unless otherwise noted 如无特殊说明 )

Characteristic 特性参数	Symbol 符号	Test Condition 测试条件	Min 最小值	Type 典型值	Max 最大值	Unit 单位
Output Voltage 输出电压	$V_o$	$V_i = -12V$ $25^\circ C$ $I_o = 40mA$	-5.76	-6	-6.24	V
Output Voltage 输出电压	$V_o$	$-8V \leq V_i \leq -21V$ $1mA \leq I_o \leq 40mA$ $0 \sim 125^\circ C$	-5.6	-6	-6.4	V
Output Voltage 输出电压	$V_o$	$V_i = -12V$ $1mA \leq I_o \leq 70mA$ $0 \sim 125^\circ C$	-5.6	-6	-6.4	V
Dropout Voltage 落差电压	$V_D$	$I_o = 40mA$ $25^\circ C$		-1.7		V
Quiescent Current 静态电流	$I_q$	$V_i = -12V$ $I_o = 0$ $25^\circ C$		2	6	mA
Quiescent Current Change 静态电流变化	$\Delta I_q$	$-10V \leq V_i \leq -21V$ $0 \sim 125^\circ C$			1.5	mA
Quiescent Current Change 静态电流变化	$\Delta I_q$	$1mA \leq I_o \leq 40mA$ $0 \sim 125^\circ C$			0.1	mA
Line Regulation 线性调整	$\Delta V_o$	$I_o = 40mA$ $25^\circ C$ $-8V \leq V_i \leq -21V$		18	160	mV
Line Regulation 线性调整	$\Delta V_o$	$I_o = 40mA$ $25^\circ C$ $-10V \leq V_i \leq -21V$		16	150	mV
Load Regulation 负载调整	$\Delta V_o$	$1mA \leq I_o \leq 100mA$ $V_i = -12V$ $25^\circ C$		8	72	mV
Load Regulation 负载调整	$\Delta V_o$	$1mA \leq I_o \leq 40mA$ $V_i = -12V$ $25^\circ C$		7	50	mV
Output Noise Voltage 噪声电压	$V_N$	$10Hz \leq f \leq 100kHz$ $25^\circ C$		144		$\mu V/V_o$
Ripple Rejection 纹波抑制	RR	$-9V \leq V_i \leq -19V$ $f = 120Hz$ $0 \sim 125^\circ C$	40	70		dB

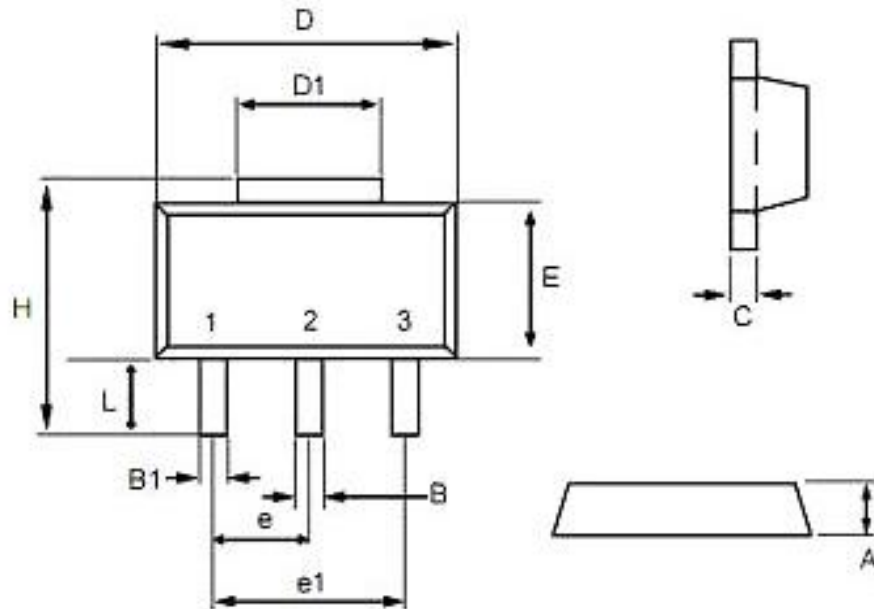
## ■ Typical Characteristic Curve 典型特性曲线



## ■ Typical Application 典型应用



## ■SOT-89 Dimension 外形封装尺寸



Dim	min	max
A	1.40	1.60
B	0.40	0.56
B1	0.35	0.48
C	0.35	0.44
D	4.40	4.60
D1	1.35	1.83
e	1.50 BSC	
e1	3.00 BSC	
E	2.29	2.60
H	3.75	4.25
L	0.80	1.20