



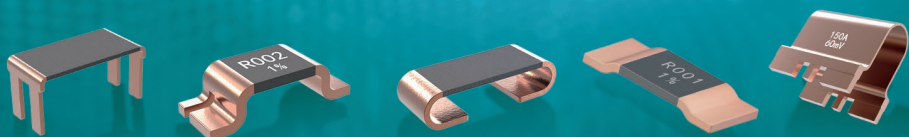
富捷科技

高品质合金电阻 中国品牌

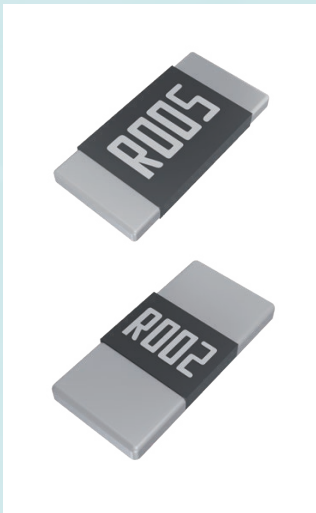
HIGH QUALITY ALLOY RESISTORS
CHINESE BRAND

合金电阻产品目录

FOSAN



FPM SERIES



- 特性：
- 良好的散热
 - 低温漂
 - 高稳定性
 - 更高功率

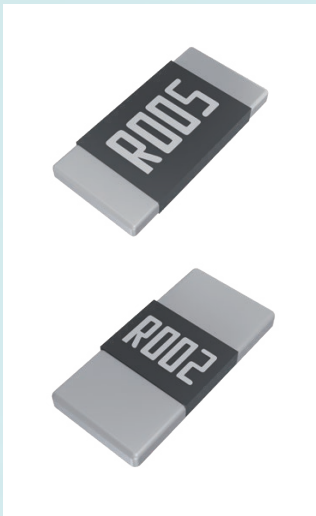
TCR (PPM/°C): ±50
TOLERANCE: 1%, 2%, 5%
OPERATING TEMPERATURE (°C): -55~+170

SIZE	RESISTANCE (mΩ)	MATERIAL	POWER (W)
2512	1~680	CuMnSn/CuMn	3
2512-L	0.5~4		

NOTE: 阻值精度为 0.5% 的需求,阻值需满足 $R \geq 10m\Omega$, 详情请咨询我们的销售团队。

NOTE: Resistance accuracy of 0.5% on demand, resistance value to meet $R \geq 10m\Omega$, please contact our sales team for details.

FRM SERIES



- 特性：
- 纯合金材质
 - 小尺寸 高功率
 - 高稳定性

TOLERANCE: 1%, 2%, 5%
OPERATING TEMPERATURE (°C): -55~+170

SIZE	RESISTANCE (mΩ)	MATERIAL	POWER (W)	TCR (PPM/°C)
0805	1~5	CuMn	0.5	±50
	5~10		0.25	
	11~25		0.15	
1206	0.5~1	CuMnSn/CuMn	1	±50
	1~100	CuMn		
	100~200	Karma/FeCrAl	0.5	
2010	0.5~1	CuMnSn/CuMn	1.5	±70
	1~10	Karma/FeCrAl	1	
	10~100		0.75	±50
	100~150		0.5	
2512	1~680	Karma/CuMn	2	±50
2512-L	0.5~4	CuMnSn/CuMn		

NOTE: 阻值精度为 0.5% 的需求,阻值需满足 $R \geq 10m\Omega$, 详情请咨询我们的销售团队。

NOTE: Resistance accuracy of 0.5% on demand, resistance value to meet $R \geq 10m\Omega$, please contact our sales team for details.

FCR SERIES



特性：● 电子束焊结构 ● 耐冲击 低电感
● 纯合金采样电阻

TCR (PPM/°C): ±20、±50、±100

TOLERANCE: 0.5%、1%、2%、5%

OPERATING TEMPERATURE (°C): -55~+170

SIZE	RESISTANCE (mΩ)	MATERIAL	POWER (W)
/	0.5~20	CuMn Karma/FeCrAl	1~7

FWP SERIES

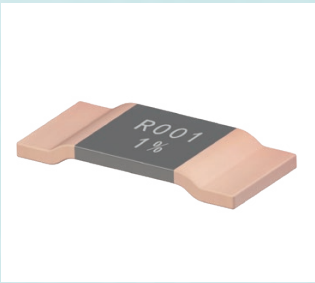


特性：● 电子束焊结构 ● 高精度 低温漂
● 高稳定性 阻值可定制

OPERATING TEMPERATURE (°C): -55~+170

SIZE	RESISTANCE (mΩ)	MATERIAL	POWER (W)	TCR (PPM/°C)	TOLERANCE
2010	0.5~5	CuMnSn/CuMn	1.5	±50	1%
	5~100	Karma		±15	2%
	100~150		2	±30	5%
2512	0.5~5	CuMnSn/CuMn	3	±50	0.1% 0.5%
	6~100	Karma		±15	1% 2% 5%
	100~200		2	±30	
2817	0.5~5	CuMnSn/CuMn	5	±50	1%、2%、5%
	5~100	Karma	4	±15	0.1% 0.5%
	100~200		3	±30	
2725	0.5~5	CuMnSn/CuMn	5	±50	1%、2%、5%
	5~100	Karma	4	±15	0.1% 0.5%
	100~150		3	±30	
2728	0.5~5	CuMnSn/CuMn	5	±50	1%、2%、5%
	5~100	Karma	4	±15	0.1% 0.5%
	100~150		3	±30	
3637	0.5~2	CuMnSn/CuMn	5	±50	1%、2%、5%
	3~100	Karma		±15	0.1% 0.5%
	100~150		4	±30	
4320	0.5~5	CuMnSn/CuMn	5	±50	1%、2%、5%
	5~100	Karma		±15	0.1% 0.5%
	100~200		4	±30	
4527	0.5~5	CuMnSn/CuMn	6	±50	1%、2%、5%
	5~100	Karma	5	±15	0.1% 0.5%
	100~200		4	±30	

FCM SERIES



特性：● 电子束焊结构 ● 低电感 大功率、高稳定性
● 纯合金采样电阻

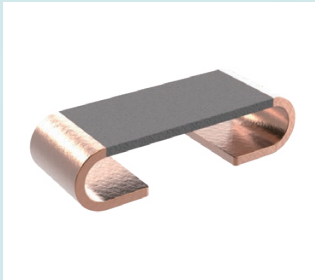
OPERATING TEMPERATURE (°C):-55~+170

SIZE	RESISTANCE (mΩ)	MATERIAL	POWER (W)	TCR (PPM/°C)	TOLERANCE
2512	0.2	CuMnSn	6	±170	1%
	0.3			2%	
	0.5			±120	5%
	1.0	Karma / FeCrAl	5	±100	0.5% 1% 2% 5%
	2.0		±50		
	3.0			4	
	4.0			3	
	5.0				
3920	0.2	CuMnSn	12	±200	1% 2% 5%
	0.3		10	±150	
	0.4		9	±70	
	0.5		9		
	0.7		8		
	1.0	Karma / FeCrAl	7	±50	0.5% 1% 2% 5%
	1.0		8		
	1.5		7		
	2.0		6		
	3.0		5		
	4.0		5		
5930	0.1	CuMnSn	15	±200	1% 2% 5%
	0.2	CuMn		±150	
	0.3		10	±75	
	0.5				
	1.0	Karma / FeCrAl	9	±50	0.5% 1% 2% 5%
	1.5		8		
	2.0		7		
	3.0				

NOTE: 阻值为非标阻值的可定制生产,详情请咨询我们的销售团队。

NOTE: Resistance value fine for non-standard resistance value can be customised production, please consult our sales team for details.

FCN SERIES



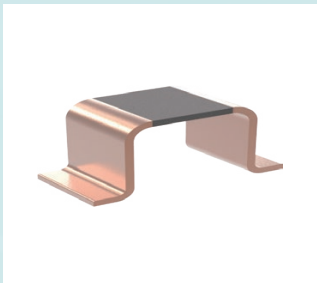
特性：● 无调阻技术,高精度
● 适用于直流低频应用

TOLERANCE:0.5%、1%、2%、5%

OPERATING TEMPERATURE (°C):-55~+170

SIZE	RESISTANCE (mΩ)	MATERIAL	POWER (W)	TCR (PPM/°C)
4312	2~3	CuMn	3	±240
	4~9			±50
	10~15	Karma /FeCrAl	2	±40
	16~50			±40
4320	1.0	CuMn	5	±240
	2~4			±50
	5~25	Karma /FeCrAl		±40

FJR SERIES

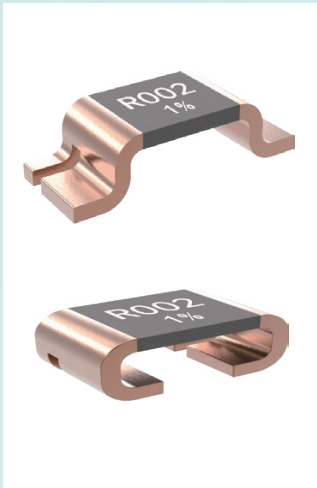


特性：● 电子束焊结构 ● 低电感 耐冲击
● 高稳定纯合金采样电阻

TCR (PPM/°C): ±20、±50、±100
TOLERANCE: 0.5%、1%、2%、5%
OPERATING TEMPERATURE (°C): -55~+170

SIZE	RESISTANCE (mΩ)	MATERIAL	POWER (W)
3920	5~15	Karma/FeCrAl	5
5930	4~10		7

FWK SERIES



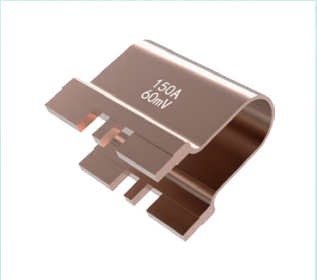
特性：● 四脚开尔文结构 ● 低热电势 低电感
● 大电流 抗脉冲

TOLERANCE: 0.5%、1%、2%、5%
OPERATING TEMPERATURE (°C): -55~+170

* 为 P130 环境测试所得额定功率

SIZE	RESISTANCE (mΩ)	MATERIAL	POWER (W)	TCR (PPM/°C)
2726	0.2	CuMnSn	3~12	±75
	0.3~1	CuMn		±50
	1~5	Karma /FeCrAl		
4026	0.2	CuMnSn	3~12	±75
	0.3~1	CuMn		±50
	1~5	Karma /FeCrAl		
1216	0.3~0.5	CuMnSn	*5	±50
	0.5~1	CuMn	*3	
	1.5~3	Karma	*2	
2726-P	0.2	CuMnSn	3~12	±40
	0.3~1	CuMn		±20
	1~5	Karma		
4026-P	0.2	CuMnSn	3~12	±40
	0.3~1	CuMn		±20
	1~5	Karma		

FUS SERIES



特性：● 电子束焊结构 ● 低电感 过流能力强
● 引脚易于锡焊 ● 高可靠性

TCR (PPM/°C): ±20、±40、±100
TOLERANCE: 1%、2%、5%
OPERATING TEMPERATURE (°C): -55~+170

PINPITCH (MM)	RESISTANCE (mΩ)	MATERIAL	CURRENT (A)
AS SPEC.	0.1~10	CuMn	5~300
AS SPEC.			5~200
AS SPEC.	0.1~30		

FPCS SERIES



- 特性：
- 用于大电流信号采样
 - 过电流能力强
 - 内置NTC温度传感器
 - 适用动力电池的电流检测

TCR (PPM/°C): ±75
TOLERANCE: 1%、2%、5%
OPERATING TEMPERATURE (°C): -55~+170

SIZE	RESISTANCE (mΩ)	MATERIAL	POWER (W)
8536	0.02~0.1	CuMn	50
8420	0.05~0.25		20
6820			

FCS SERIES

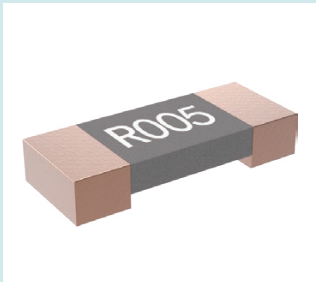


- 特性：
- 用于大电流信号采样
 - 过电流能力强
 - 超低热电势
 - 低寄生电感

TCR (PPM/°C): ±100
TOLERANCE: 1%、5%
OPERATING TEMPERATURE (°C): -55~+170
-P为带PIN链接

SIZE	RESISTANCE (mΩ)	MATERIAL	POWER (W)
8536-P	0.05~0.25	CuMn	50
8518-P			20
6918-P	0.02~0.1		
9420	0.05~0.25		50
8536	0.02~0.1		
8420	0.05~0.25		20
8518	0.02~0.1		
6918	0.02~0.2		

FSM SERIES

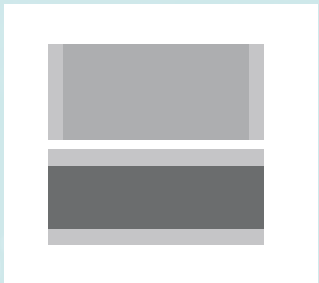


- 特性：
- 电子束焊结构
 - 耐冲击 低电感
 - 高负载稳定性

OPERATING TEMPERATURE (°C): -55~+170

SIZE	RESISTANCE (mΩ)	MATERIAL	POWER (W)	TCR (PPM/°C)	TOLERANCE
1206	0.3	CuMnSn	2~3	±50 ±75 ±100 ±200	1%
	0.4~1	CuMn			2%
	2~6	Karma/FeCrAl			5%
2010	0.3~0.4	CuMnSn	3~6	±50 ±75 ±100 ±200	1%
	0.5~1.5	CuMn			2%
	2~6	Karma/FeCrAl			5%
2512	1~5	Karma	4~7	±10、±20	0.5%、1%、2%、5%
3920	1~5	Karma	5~9	±10、±20	0.5%、1%、2%、5%

CJR SERIES



- 特性：
- 纯合金跳线电阻
 - 过电流能力强
- 纯铜材质

OPERATING TEMPERATURE (°C):-55~+170

SIZE	RESISTANCE (mΩ)	MATERIAL	CURRENT (A)
/	0.0	Cu	50~600A

FMK SERIES



- 特性：
- 四脚开尔文结构
 - 过电流能力强
- 低电感 耐冲击

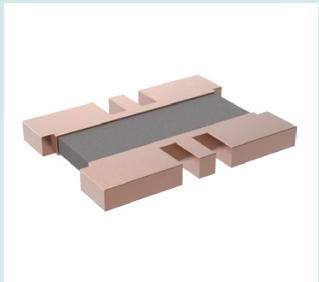
TCR (PPM/°C):±50、±100

TOLERANCE:0.5%、1%、2%、5%

OPERATING TEMPERATURE (°C):-55~+170

SIZE	RESISTANCE (mΩ)	MATERIAL	POWER (W)
3820	0.2~5	CuMnSn/CuMn Karma/FeCrAl	3~5

FHS SERIES



- 特性：
- 电子束焊结构
 - 低电感 耐冲击
- 低热电势 良好的散热
 - 过电流能力强

TCR (PPM/°C):±10、±20

TOLERANCE:1%、2%、5%

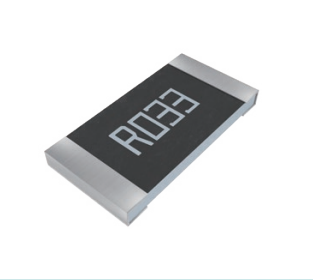
OPERATING TEMPERATURE (°C):-55~+170

SIZE	RESISTANCE (mΩ)	MATERIAL	POWER (W)
1625	0.1	Karma	200
	0.2		120
	0.25		
	0.3		80
	0.5		
2025	0.1	Karma	200
	0.2		120
	0.3		80
2530	0.1	Karma	300
	0.2		120
	0.25		
	0.3		
	0.5		80
7998	0.1	Karma	300
	0.2		120
	0.25		
	0.3		
	0.5		80

METAL FOIL SERIES

金属箔电阻系列

FMS

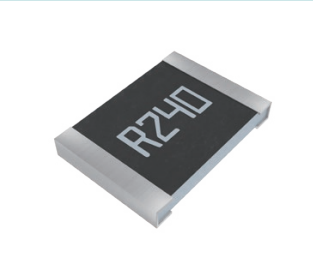


特性：● 半合金 ● 高功率 ● 低阻值
● 低温漂 ● 小尺寸

TCR (PPM/°C) : ±50
TOLERANCE: 1%、2%、5%
OPERATING TEMPERATURE (°C): -55~+155

SIZE	RESISTANCE T(mΩ)	MATERIAL	POWER (W)
0603	5~20	Metal Foil	0.5
0805	5~30		0.75
1206	5~40		1
2512	5~10		2

FMH

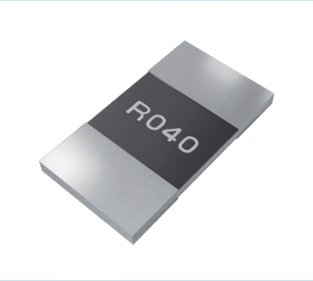


特性：● 金属膜 ● 高功率
● 低阻值 ● 低温漂

TCR (PPM/°C) : ±100
TOLERANCE: 1%、2%、5%
OPERATING TEMPERATURE (°C): -55~+155

SIZE	RESISTANCE T(mΩ)	MATERIAL	POWER (W)
1206	50~910	Metal Foil	1
2010			1、1.5、2
2512			

FMB



特性：● 金属膜 ● 高功率 ● 低阻值
● 低温漂 ● 宽电极

TOLERANCE: 1%、2%、5%
OPERATING TEMPERATURE (°C): -55~+155

SIZE	RESISTANCE (mΩ)	MATERIAL	POWER (W)	TCR (PPM/°C)
0603	10~20	Metal Foil	0.25	±200
	21~90			±100
0805	10~20	Metal Foil	0.5	±200
	21~90			±100
1206	10~20	Metal Foil	0.5	±200
	21~90			±100
2010	10~20	Metal Foil	0.75	±200
	21~90			±100
2512	10~20	Metal Foil	1	±200
	21~90			±100

安徽省富捷电子科技有限公司
江西省富和电子科技有限公司

WWW.FOSAN.VIP

