

**SOD-323 Schottky Barrier Rectifier Diode 肖特基势垒整流二极管**

■ **Features 特点**

Low forward voltage drop 低正向压降  
High current capability 高电流能力  
Surface mount device 表面贴装器件  
Case 封装:SOD-323  
Marking 印字: 2



■ **Maximum Rating 最大额定值**

( $T_A=25^{\circ}\text{C}$  unless otherwise noted 如无特殊说明, 温度为  $25^{\circ}\text{C}$ )

Characteristic 特性参数	Symbol 符号	Rating 额定值	Unit 单位
Peak Reverse Voltage 反向峰值电压	$V_{RM}$	45	V
DC Reverse Voltage 直流反向电压	$V_R$	40	V
RMS Reverse Voltage 反向电压均方根值	$V_{R(RMS)}$	28	V
Forward Rectified Current 正向整流电流	$I_F$	0.35	A
Peak Surge Current 峰值浪涌电流	$I_{FSM}$	1	A
Power Dissipation 耗散功率	$P_D$	200	mW
Thermal Resistance J-A 结到环境热阻	$R_{\theta JA}$	500	$^{\circ}\text{C}/\text{W}$
Junction/Storage Temperature 结温/储藏温度	$T_J, T_{stg}$	125 $^{\circ}\text{C}$ , -50to+150 $^{\circ}\text{C}$	

■ **Electrical Characteristics 电特性**

( $T_A=25^{\circ}\text{C}$  unless otherwise noted 如无特殊说明, 温度为  $25^{\circ}\text{C}$ )

Characteristic 特性参数	Symbol 符号	Min 最小值	Type 典型值	Max 最大值	Unit 单位	Condition 条件
Reverse Voltage 反向电压	$V_R$	40			V	$I_R=1\text{mA}$
Forward Voltage 正向电压	$V_F$			0.45	V	$I_F=10\text{mA}$
Reverse Current 反向电流	$I_R$			1	$\mu\text{A}$	$V_R=10\text{V}$
Diode Capacitance 二极管电容	$C_T$		20		pF	$V_R=4\text{V}, f=1\text{MHz}$

■ Typical Characteristic Curve 典型特性曲线

FIG.1-TYPICAL FORWARD CURRENT DERATING CURVE

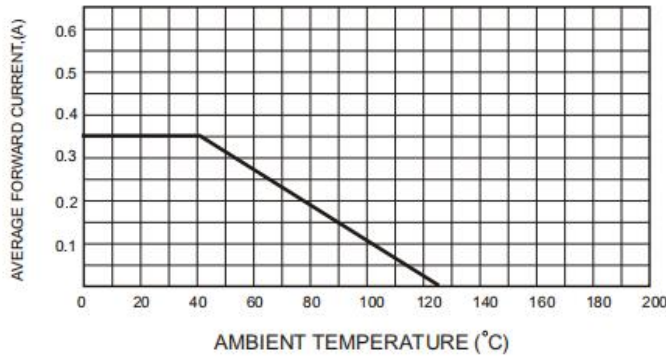


FIG.3 - Power Derating Curve

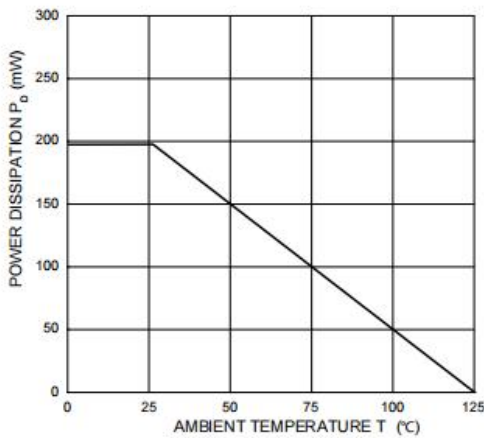


FIG.4-TYPICAL JUNCTION CAPACITANCE

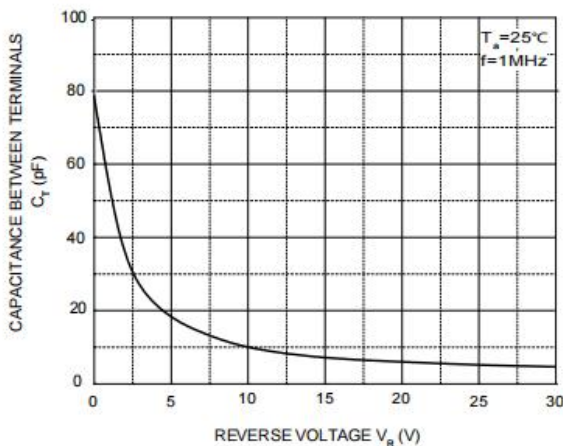


FIG.2-TYPICAL FORWARD CHARACTERISTICS

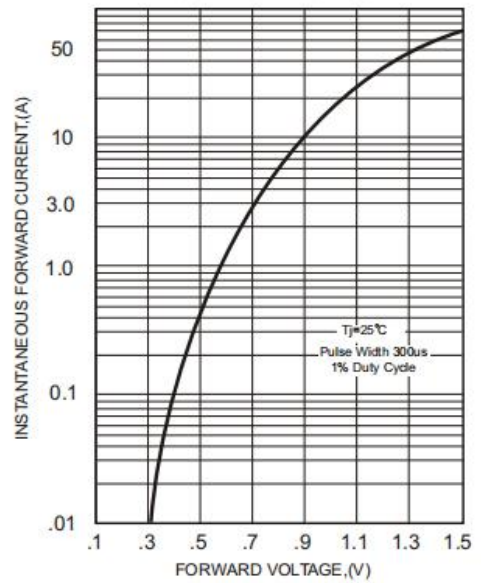
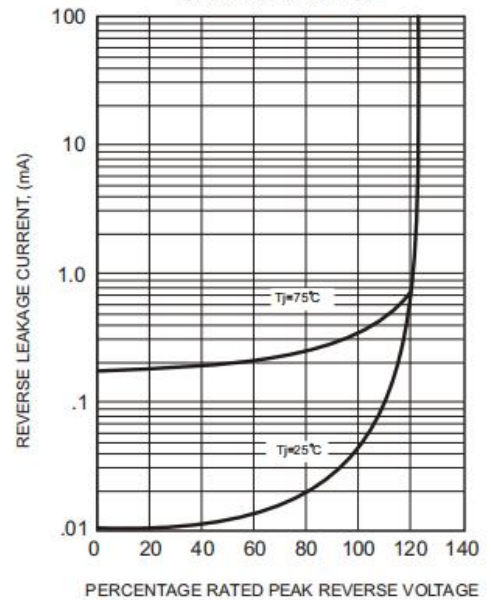
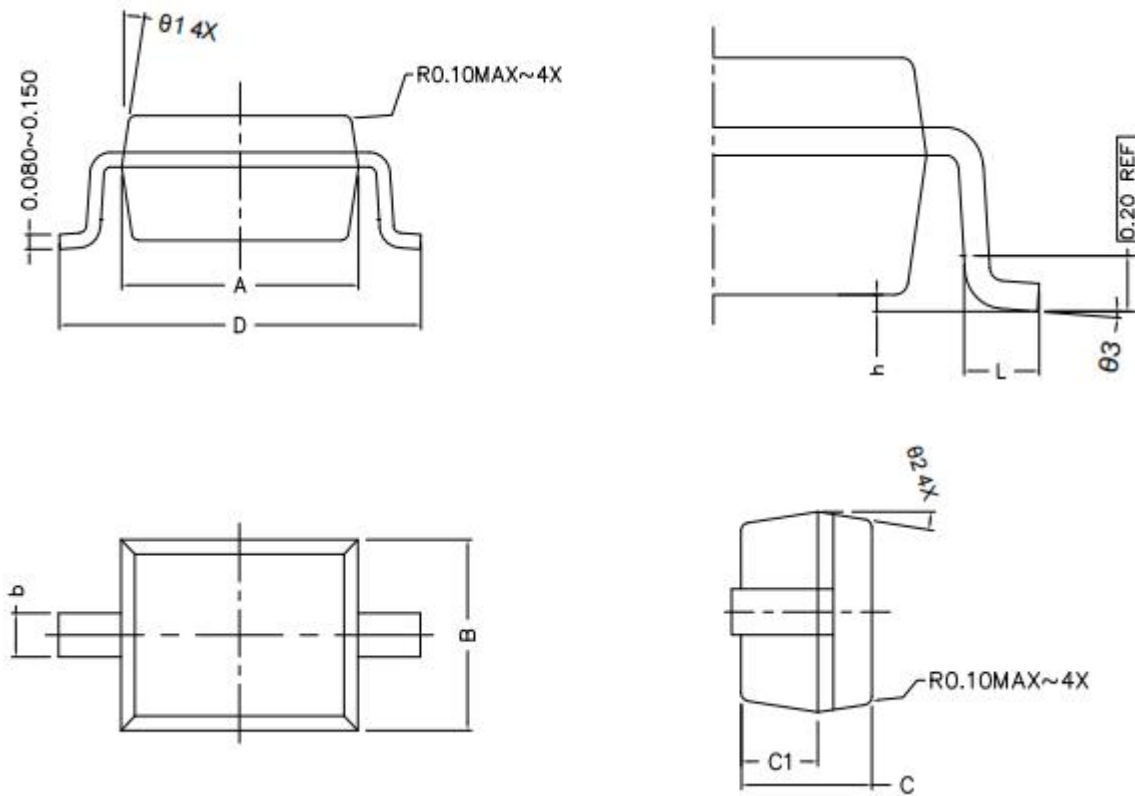


FIG.5 - TYPICAL REVERSE CHARACTERISTICS



■ Dimension 外形封装尺寸



Symbol	Dimensions In Millimeters		Dimensions In Inches	
	Min	Max	Min	Max
A	1.600	1.800	0.063	0.071
B	1.200	1.400	0.047	0.055
C	0.750	0.950	0.030	0.037
C1	0.450	0.550	0.018	0.022
D	2.450	2.800	0.096	0.110
L	0.200	0.400	0.008	0.016
b	0.200	0.400	0.008	0.016
h	0.020	0.120	0.001	0.005
$\theta 3$	$0^\circ$	$8^\circ$	$0^\circ$	$8^\circ$